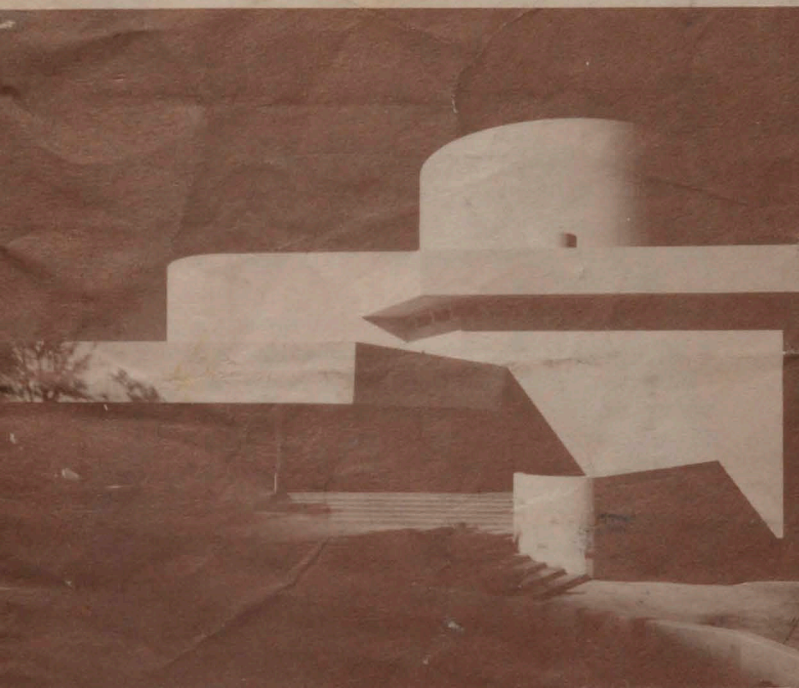


DALLAS THEATER CENTER

designed by Frank Lloyd Wright



THE KALITA HUMPHREYS THEATER

Paul Baker, Director

Providing Dallas with

- PERMANENT ACTING COMPANY
- RESIDENT PRODUCTION STAFF
- CONTINUOUS REPERTORY SCHEDULE
- GRADUATE SCHOOL OF DRAMA

3636 Turtle Creek Blvd.

LA 6-8857



THE BEGINNING

In 1954 a group of Dallas civic leaders envisioned a completely new concept for American Theater. They felt Dallas should take the lead in developing a high quality producing theater center for the Southwest... a center which would make inquiries into new and exciting areas of the drama, utilizing to the fullest all the new materials and equipment of our technological age. They searched for the outstanding talents in America to draft their ideas into workable plans. They found them in Frank Lloyd Wright to design the building and Paul Baker to design the program inside the building.

The basic ideas formulated in 1954 are now in operation. In December of 1959 the Dallas Theater Center had begun and the original vision was a reality.



THE PRESENT

After a highly successful first season, the Dallas Theater Center has established a sound and workable theatrical program. It is a program so wide in scope that over six hundred people are actively engaged in its development.

A staff and faculty of twenty-two direct the graduate level training group and full company of actors and technicians numbering over fifty. Some two hundred young people study in the Teen-Children Theater Program while evening classes give theater training to Dallas working and professional people. A Woman's Committee of over 300 acts as auxiliary force for the Center's tremendously heavy schedule. A true CENTER of theater is now in progress.

A full stage production season from November through July provides a year-round entertainment center for live drama. Regular performance nights are Wednesday through Saturday of each week at 8:15 with a Saturday matinee at 2:30. Tickets are only \$2.50 and \$3.25 (students \$1.50 week nights and matinee).



THE FUTURE

The ultimate purpose of the directors and staff of the Dallas Theater Center is to provide a training and producing center unequalled in the United States. The beginning has been accomplished. The present is assured. In years to come, the academic and professional training available in Dallas in a building equipped with the very latest technical and artistic developments, will produce actors, directors, designers, and playwrights, taking their places in educational, community, and professional careers.



THE GRADUATE SCHOOL

The Dallas Theater Center is affiliated with the Graduate School Program of Baylor University. Advanced drama students from the United States and foreign countries take courses in theater arts toward a Master's Degree. The degree is awarded by Baylor University through work completed in Dallas. Emphasis in this training is definitely on production experience. Some scholarships are available to qualified applicants. Further information may be obtained by writing The Director, Center Graduate Program.

The theater training received in Dallas is the finest available.



THE REPERTORY PLAN

Repertory theater is much like a library. A good book is never discarded but filed for use again. Most theaters schedule a play for a certain number of continuous performances within a short period. The Dallas Theater Center, on the other hand, schedules performances of a particular play throughout the nine-month season. Thus, the revolving, repertory plan enables the audience to see a play in May that opened in November.

The repertory system provides the best possible training for actors as well as variety for the audience. Nine new plays are produced each season by the Dallas Theater Center. The best of these are kept for repeat performances in repertory during following seasons. In Dallas, then, is a veritable library of live theater.

Largely because of the extensive training and experience received in this repertory plan, the calibre of talent and presentation is the highest to be found among resident theaters. Whether comedy or drama, you'll see the finest at the Theater Center.



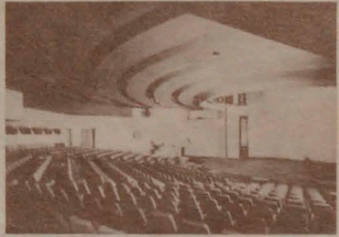
TEEN-CHILDREN THEATER

Children from ages 6 to 11 find direction and expression for their ideas and abilities through the introduction of all dramatic art forms plus work in pantomime, creative writing, movement and diction. The growth of each individual child is stressed.

Teenagers from 12 to 17 are encouraged to express and develop their skills in drama by writing, acting and directing their own plays. Emphasis is placed upon creative growth and development, rather than technique and production. Plays and demonstrations are open to the public during the year. Parents are urged to inquire about fall classes by the first of the summer. For information, contact Ruth Byers, director of this program.

A SHOWPLACE OF THEATER DESIGN

"... designed to liberate the stage from the shackles of tradition and afford a more plastic and intimate means of dramatic presentation." These are Frank Lloyd Wright's own notes on his design for the Theater Center. The building is a dramatic experience in itself. Inside, the auditorium will seat 444 people in extremely comfortable and extra-wide seats. Within the circular stage area is a revolving stage of 30' diameter. There is a total playing area of 80' across the stage. The entire structure is a journey into the future of theater design.



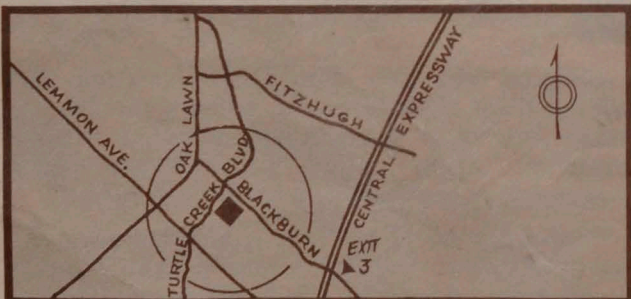
DAILY TOURS

The Theater Center conducts regular guided tours through the modernistic building. Monday through Friday, 12:00 and 12:30; Saturday, 12:30 and 1:00, and Sunday, 1:30 to 4:30. Admission is 50 cents and 25 cents and the tour lasts about thirty minutes. You see every part of the building. Limited view tours are available from 10:00 to 3:30 daily. Special arrangements can be made for large touring groups. About 400 people per week tour the Dallas Theater Center.

GROUP PLANS

Your club, church, convention or organization can make money by buying and re-selling blocks of tickets to Center performances. Or your group may wish to take advantage of special discounts available. Several plans are made possible by the Theater Center. Call or write: Ticket Manager, Dallas Theater Center, for full information.

HOW TO GET THERE



All gifts and contributions to the non-profit Dallas Theater Center are tax-deductible.

Suitable memorials are available in the building, scholarship and other fund areas. Theater officials will be happy to explain fully how you may participate in the financial development of this important drama center and training institution.